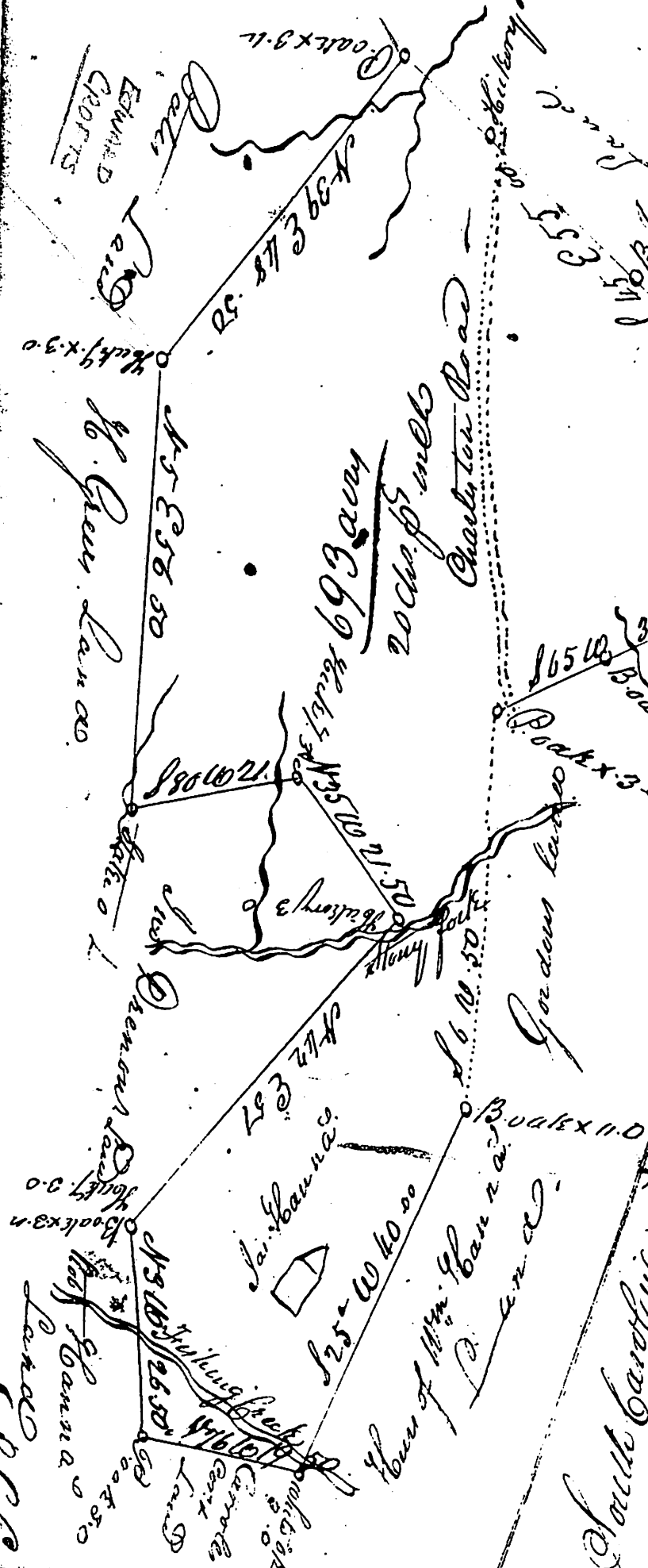


1813



North Carolina
 of 100 hundred acres for James Hanna a tract of land containing one hundred and ninety three acres situated in the District of York on both sides of the Honey Fork and Fishing Creek and is bounded S.W. by Green's land, South and E. by Matthew Robinson & N.E. by Zachariah Pate's land & Henry Green's land S.W. & N.W. C.H. & N.E. by John Green's land, S.W. & N.W. C.H. & N.E. by William Hanna & Land and both such for an and marks as the above plat Represent - Green's land and the other. April 1813 - 11.