

Map of Laurelwood Cemetery

STREET

LAUREL

WHITE

STREET

POTTER'S FIELD



N 57° 10' E 750.5 FT

N 57° 10' E 645.5 FT

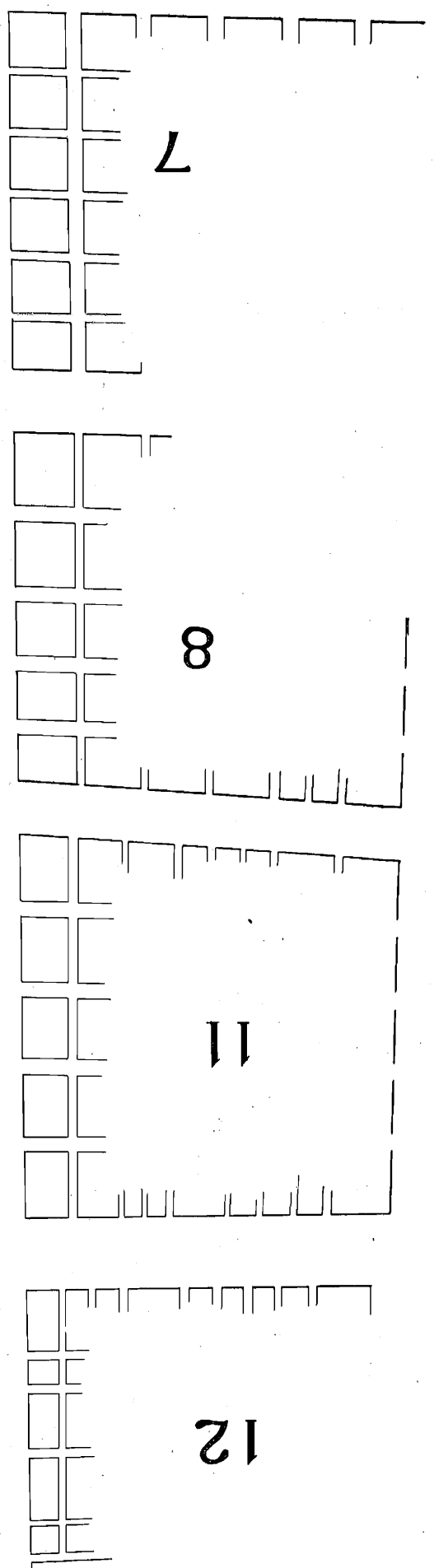
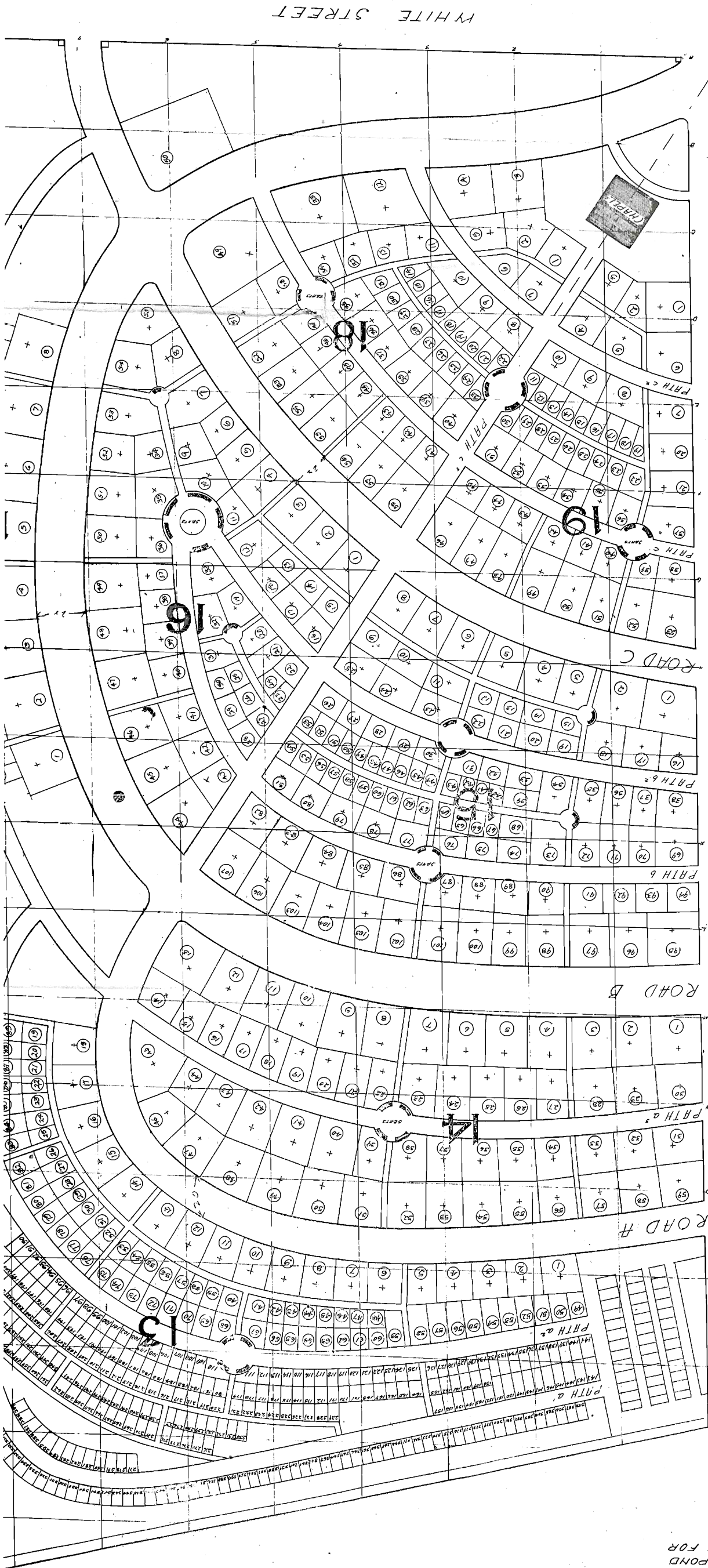
N 49° 50' W 793.5 FT

W 11° 30' E 110 FT

W 11° 30' E 110 FT

N 72° 15' W 781 FT

FINAL PLAN FOR CEMETERY EXTENSION
 CITY OF ROCK HILL, S.C.
 PREPARED FOR BOARD OF COMMISSIONERS BY
 E.S. DRAPER, LANDSCAPE ARCHT. & CITY PLANNER-505-6 TRUST BLDG-CHARLOTTE, N.C.
 SCALE 1"=30' ~ DEC 1918 ~ PLAN No. 86-5



NOTE: LETTERS OF ROADS & ALLEYS CORRESPOND TO PROFILE SHEETS. SEE PROFILES FOR GRADES OF ROADS & ALLEYS.

SECTIONS AND NO. OF LOTS IN EACH:

13	588
14	59
15	107
16	55
17	55
18	58
19	53
TOTAL	755

LOTS FOR VAULTS
 14-13
 17-2 AND 6
 16-49-55
 18-12, 49 AND 50