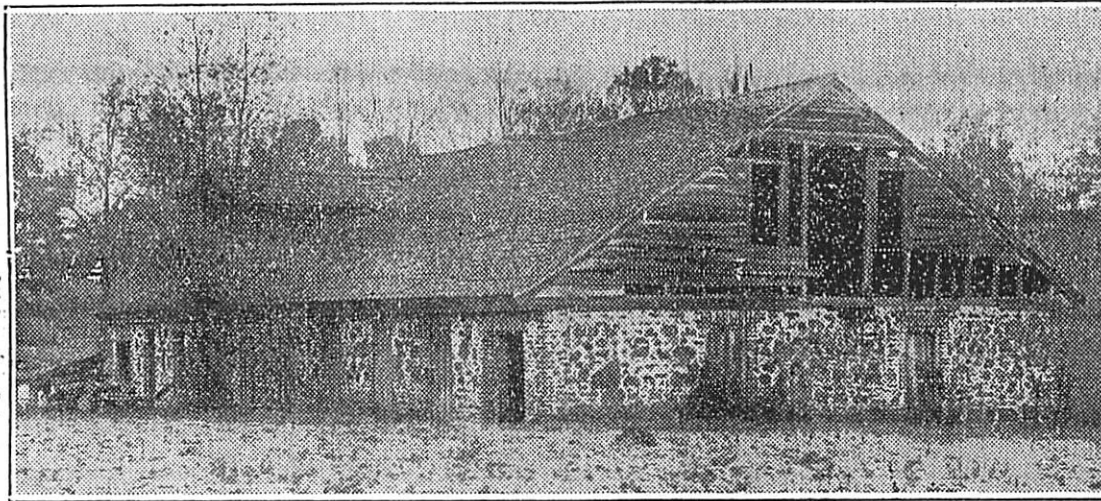


Sat. 21 Mar 1936

10-G

THE STATE: COLUMBIA, S

COTTON FABRICS WERE MADE HERE ABOUT 1809



In this quaint building, shown in its present state, erected by Col. Thomas Taylor, patriarch of Columbia, just below the present dam at Dent's pond on Gill creek, near Columbia, "Edward and John Fisher established the first real cotton factory." It was served by the labor of Negro slaves. Swatches of the fabrics woven by Colonel Taylor—sheeting and bagging for cotton bales—are still in the possession of the Taylor family in Columbia. At right is a sample of the bagging. The mystery is how Colonel Taylor contrived without a press to put 325 pounds of lint cotton into a bag as shown by a letter of March 28, 1809, to his son, Henry P. Taylor, in Charleston.

SOME OUTSTANDING LODGES IN VARIOUS SECRET ORDERS

MYRTLE LODGE, KNIGHTS OF PYTHIAS

The Order of Knights of Pythias is among the best and most favorably known fraternal organizations in this state. Myrtle Lodge No. 3 of Columbia, as the name implies, is the third oldest Pythian lodge in South Carolina. Only two others outrank it in age—Palmetto No. 1 of Charleston and Damon No. 2, of Florence.

About this time 64 years ago Congressman Reed of New Jersey visited Columbia and while here held several meetings for the purpose of organizing a Pythian lodge. As a result, March 30, 1872, Myrtle Lodge No. 3 was instituted. The instituting officers representing the Grand Lodge of South Carolina on this occasion were Augustine T. Smythe, C. K. Rogers and F. K. Houston, all of

ful citizens. Provision is also made for the payment of sick and death benefits to its members.

Richland council, with several hundred members, is one of the most active and virile fraternal organizations in the city of Columbia. Branches of the order in Eau Claire, Olympia and Brookland likewise make their contribution to the public service and common welfare.

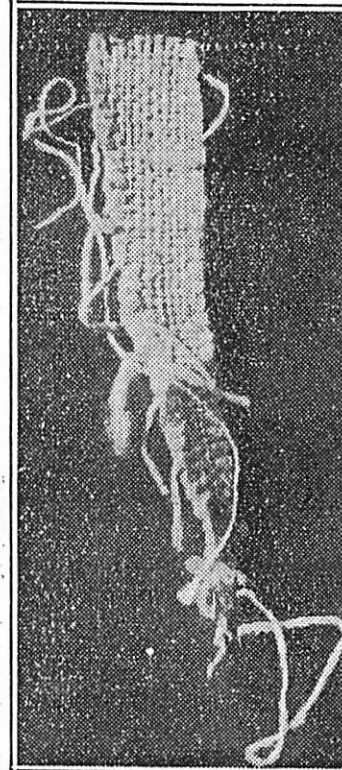
ANDREW J. BETHEA.

Banks Dove Council, No. 34, Daughters of America

Banks Dove Council, No. 34, Daughters of America, is the local branch of a great national patriotic organization, the Daughters of America, which is the official auxiliary to the Junior Order American Mechanics. Some of the objects of the order are:

To promote and maintain the interests of Americans and to shield them from unrestricted immigration.

To maintain the public school system of the United States and to prevent interference therewith, and to



lows has been a community asset. It has lived up to the principles of Odd Fellowship, "Friendship, Love and Truth." Throughout the years of its existence it has endeavored to pro-

OLD CHARLESTON MOST CIVILIZED TOWN SAYS WH

South Carolina's Metropolis and State Capital Gracious and Vigorous in Its Matchless Settlement

The city of Charleston, metropolis of South Carolina, termed by William Allen White of Kansas the "most civilized town in America," is situated on the beautiful bay of Charleston.

Its natural location on the best harbor on the South Atlantic coast, the energies of its people in developing its resources have made it a great table port of commerce for more than two and one-half centuries.

But it is as an "historic city" that Charleston today is most visited. Year thousands of tourists spend part of the winter within its hospitable confines, and delight in the flavor of its early establishment, crooked, narrow streets, its front, its magnificent homes, its gardens, its "Old World" air—all combine to give the city a distinctive charm.

The county of which it is the seat stretches from the mouth of the Santee to the mouth of the Edisto river, 91 miles of coast to the Atlantic ocean. It has a total area of 888 square miles.

The coast line is made up of a chain of islands, forming a natural barrier to the mainland, into which reach fingers of the sea, which include numerous small inlets and inlets the beautiful bay of Charleston, which two large tidal rivers, the Ashley and the Cooper, empty. The coast is fringed with palmetto and the land is rich with loam, produces a variety of food and crops.

The islands have long stretches of fine, smooth, sandy beaches, are easily accessible and make fine sea resorts, while they have from early times been the resort of sportsmen.

The farm lands of the county have been brought to a high degree of fertility by careful agriculture and have produced abundantly of the staple crops of the South.

Indigenous to this particular region was the famous sea island cotton, its silky staple, now practically extinct because of the ravages of the boll weevil.

Truck farming is practiced on a large scale and the vegetable production of the county holds a fine reputation in the market.

The forests of the county are rich in game and its waters with